

HOD v9 Windows User Guide

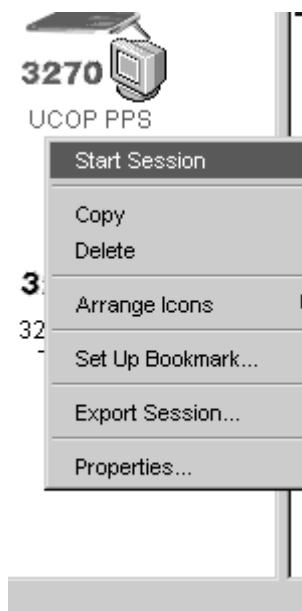
List of Topics:

- Launching a Session
- Closing a Session
- Creating Additional Sessions
- Customizing a Session:
 - Color
 - Blinking Cursor
 - Reassigning Keys
 - Displaying URLs
- Deleting a Session
- Preventing Browser Crashes
- Macros
- Session Window “Freezes”
- User Profiles
- Desktop Shortcut

Launching a Session

To launch a HOD session:

- Left-Double click an icon in the Configured Sessions window
- *OR*
- Right-click an icon in the Configured Sessions window and select “**Start Session**”.



Closing a Session

To close a HOD session:

- Logoff of Com-Plete (or exit PPS).
- Close the session window by click on the “X” in the upper right hand corner:



Clicking on the “X” without a logoff of Com-Plete (or an exit from PPS) *may leave your userid in an active state*.

Creating Additional Sessions

To create additional sessions that you can configure:

- Right-click the “3270 Display Template” icon in the “Configured Sessions” window.
- Select “Copy” and press <Enter>. A new icon will appear in the “Configured Sessions” window.
- Right-click on the new icon and select “Properties”. This screen will appear:

The screenshot shows the '1:3270 Display Template' configuration window. The left pane contains a tree view with the following categories expanded:

- Connection
 - Advanced
 - Associated Printer
 - Backup Servers
 - Proxy Server
 - TLS/SSL
 - SLP
 - Express Logon
- Terminal Properties
 - Host Graphics
- File Transfer
- Data Transfer
- Screen
 - Font
 - Print Screen
- Preferences
 - Start Options
 - Language

The main configuration area is titled 'Connection' and contains the following fields:

- Session Name: 1:3270 Display Template
- Destination Address: (empty)
- Destination Port: 23
- Protocol: Telnet (dropdown menu)
- TN3270E: Yes No
- LU or Pool Name: (empty)
- Screen Size: 24x80 (dropdown menu)
- Host Code Page: 1047 Open Edition (dropdown menu)
- Auto-Connect: Yes No
- Auto-Reconnect: Yes No

At the bottom of the window are four buttons: OK, Cancel, Keyboard..., and Help.

- Make any changes you desire; then click “OK” to save your new session. Once you have saved your new session, it will appear under your list of Configured Sessions
- A couple of examples are provided below. Additional help is available by clicking on the “Help” button. .

Example 1, create a new **Com-Plete** session.

Connection:

Session Name [name your session, such as My Com-Plete];
 Destination Address [**ccnh.ucsb.edu**];
 Destination Port [**992**];
 Protocol [**Telnet – SSL only**];
 TN3270E [**Yes**];
 Screen Size [select a screen size, such as 24x80].

Screen:

Alternate Terminal [**disabled**];
 Cursor Style [**Block**];
 Light Pen Mode [**No**]

Example 2, create a new **UCOP PPS** session.

Connection:

Session Name [name your session, such as My PPS];
 Destination Address [**uccmvsb.ucop.edu**];
 Destination Port [**992**];
 Protocol [**Telnet – SSL only**];
 TN3270E [**Yes**];
 Screen Size [select a screen size, such as 24x80].

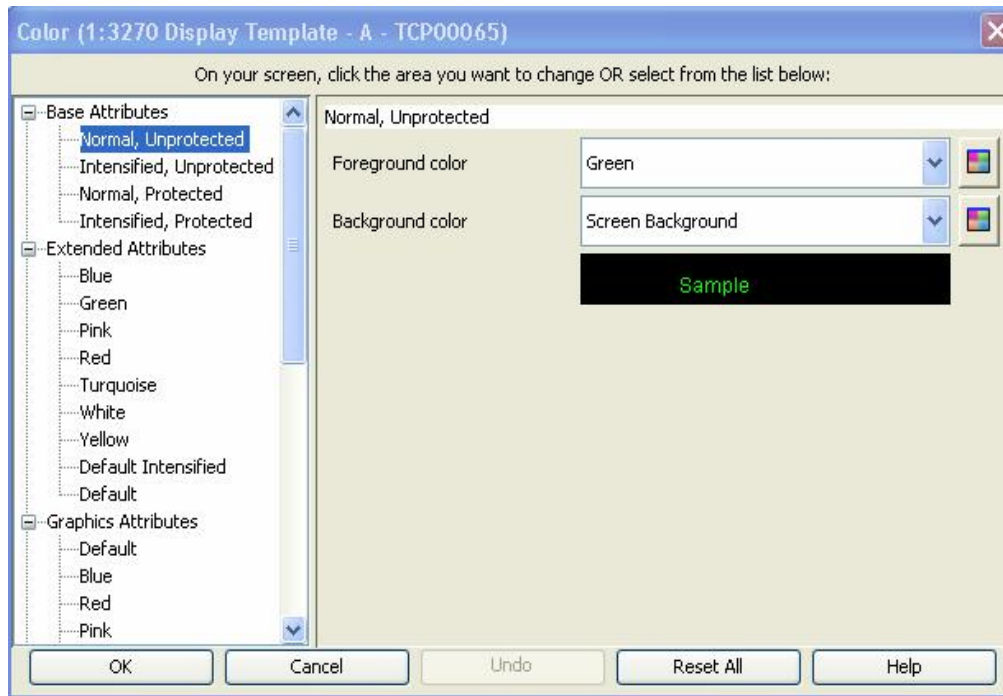
Screen:

Alternate Terminal [**disabled**];
 Cursor Style [**Block**];
 Light Pen Mode [**No**].

Customizing a Session

There are a number of ways that you can customize your HOD session to suit your personal preferences.

Color. To change your session from the default screen colors, select “**Edit, Preferences, Color**”. The following screen will appear.



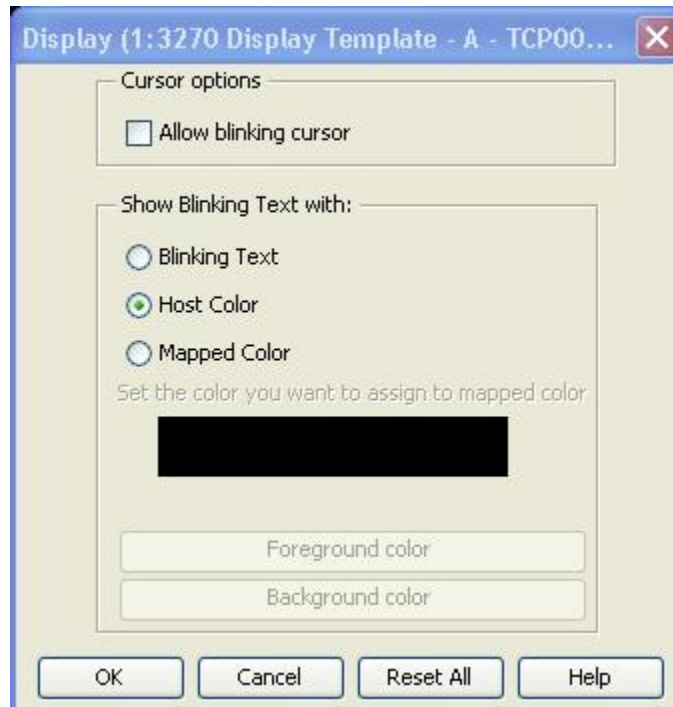
You may find changing colors is easier if you:

- (1) First click on the screen area that you wish to change (such as the screen background, for example);
- (2) Then select the color by using either the pull-down menu or use the color customizer buttons;
- (3) Be sure that you click the “Ok” button to save your color changes (If you don’t like the colors you selected, just click on “Reset All” to revert to the default colors). For detailed information on color, press the “Help” button.

Blinking cursor. To enable a blinking cursor, select “**Edit, Preferences, Display**”.

A blinking cursor (either block or underline), can make it easier for you to locate where you are on a Com-Plete or PPS screen.

Check the box for “Allow blinking cursor”, (as displayed below) and click the “OK” button to save your changes. You can click the “Help” button on the dialog box for further information.



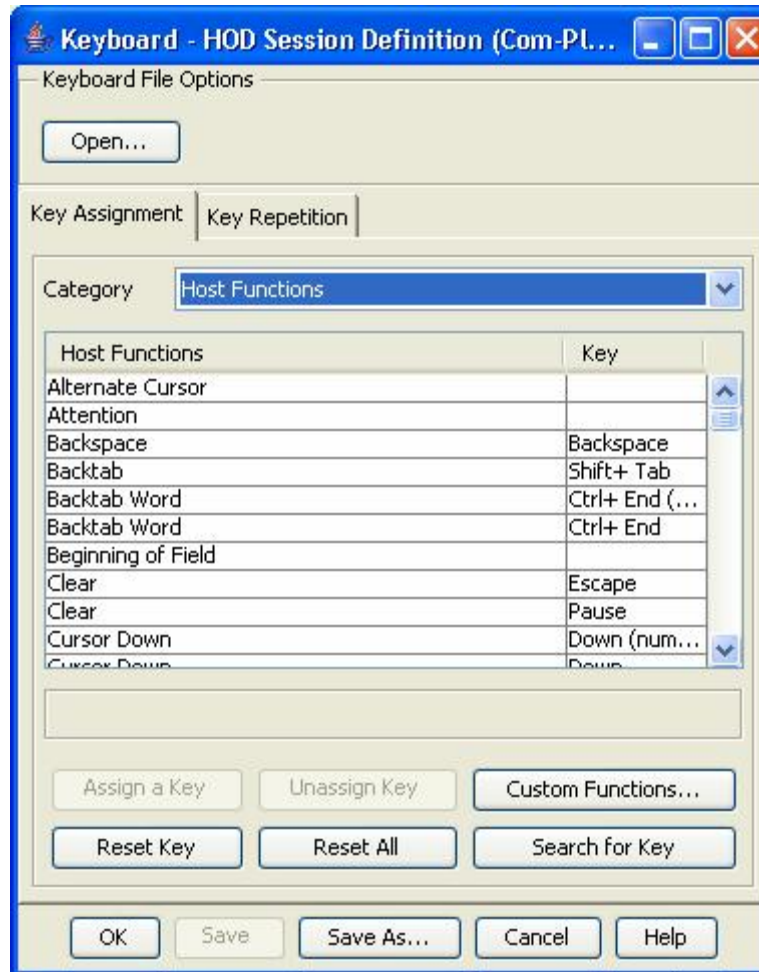
Reassigning keys. Select “**Edit, Preferences, Keyboard**” to reassign a key to a function you desire.

Why might you want to reassign a key? There are several reasons why you may wish to do so, especially if you use Com-Plete or PPS extensively.

You might assign a key for a **TN3270 Host Function** (such as assigning PA1 in Com-Plete which will force a “suspended session”, which can serve as a useful toggle switch between applications, such as STAR01 and Com-Pass. Or you could assign a key for alternating between a block or underline cursor).

If you use **Macros**, you could assign a key to quickly launch that macro (for example, you could have a “*LOGOFF” macro, to quickly logoff of Com-Plete).

For additional help, click on the “Help” button or contact IS&C.



Display URL. Select “**Edit, Preferences, URLs**”.

This preference setting allows on to launch a browser session from Com-Plete or PPS whenever a URL is displayed. When you have set the dialog screen like the one below, all URLs will be viewable in 3D. This will allow you to launch a URL from within a TN3270 session.



On this Com-pass screen, I have typed www.ucsb.edu. I can now click on this URL and my default browser will launch and the web site will be displayed. Your TN3270 session will remain active.

```

-- COM-PASS --
Suspended Programs                                Program Services                                USTS
-----
Programs      Name      C Level  PF      Service Description  Programs  ID  PF
-----
              1      11      Natural              NAT22    A   01
              2      12      Full Screen Editor  UEDIT    B   02
              3      13      Complete User Maint ULOGM    C   03
              4      14      User Profile Maint  SYCMP004 D   04
              5      15      UQ                  UQ       E   05
              6      16      ULIB                ULIB     F   06
              7      17      UPDS                UPDS     G   07
              8      18      UDS                 UDS      H   08
              9      19      UPROF              UPROF    I   09

Enter Input:
www.ucsb.edu

LU Name: TCP00628      HC TID:      Recall: =      Language: 001
Devtype: 3279 VS      Device:      Suspend: < PA1 Case   : UPPER
Lines   : 24          Key: PA2     Jump: NO NO
Columns: 80

M+ a 19/014

```

Deleting a Session

To delete a session, right click an icon in the “Configured Sessions” window and select “Delete”. You will need to confirm that you want to delete the session.



If you press “Yes” the session will *normally* be deleted. However, certain sessions *cannot* be deleted (such as the **3270 Display Template**). If you see the below message, you will not be able to delete the session.



Preventing Browser Crashes

When you have a HOD session open in one browser (for example, Netscape), use a second web browser (for example, Firefox) for other web browsing needs. This will prevent the possibility of crashing your HOD session when you inadvertently browse to a different website that crashes your web browser.

Alternatively, you can use the “Web Start” client to avoid using a browser at all.

Macros

A macro is a sequence of commands that performs actions that you have defined. In short, you record your keystrokes, save them, and then play the macro whenever you need to perform the same task. You may find Macros especially useful for repetitive tasks.

To view the Macro Manager, select “**View, Macro Manager**” on your session window.



The on-line help under “Macro Manager, using the” is a useful general guide on how to build and run macros (select “**Help, Contents, Index, M, Macro Manager, using the**”).

Session Window “Freezes”

There are several ways to “unfreeze” a session window:

- Press the “Control” [Ctrl] key on your keyboard.
- If the Keypad is visible, click on “Attention” [Attn], or on “Reset”.

User Profiles

Under Windows, user profiles are stored in “Documents and Settings\username”.

Desktop Shortcut

You can create a desktop shortcut for a TN3270 session. To use this, it is assumed that you have selected a default browser (such as Firefox, Netscape, or Internet Explorer, for example) and that you have already downloaded the HOD

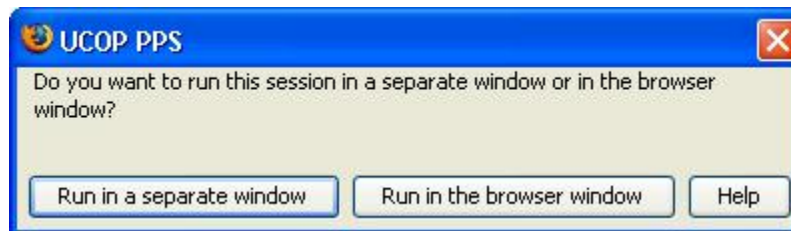
browser Cached Client. Note that this feature cannot be used with the “Web Start” client as it is greyed out.

Example: create a desktop shortcut (this one is for PPS but the same steps apply for Com-plete).

1) Right click on the PPS session icon, and select “Set Up Bookmark”.



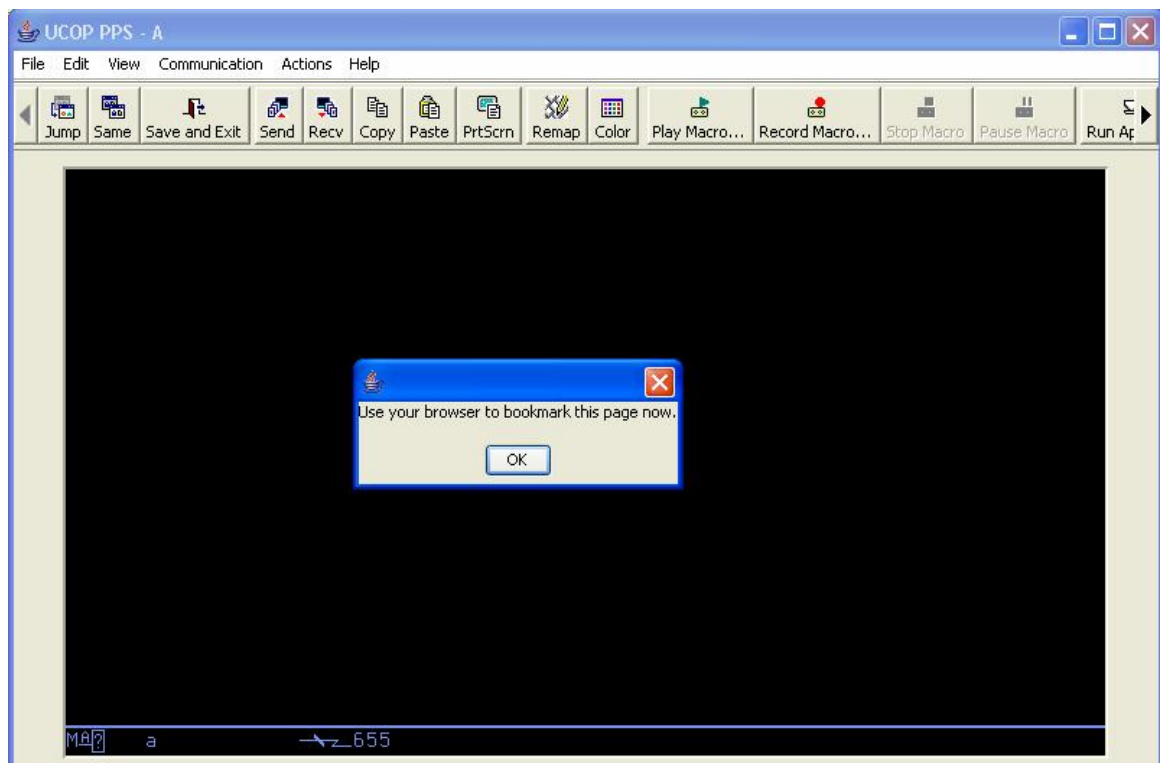
2) When the following question appears, it is recommended that you click on “Run in a separate window”, as this may minimize potential browser conflicts.



The following will be displayed, and your UCOP PPS session will be launched.



3) Click “OK” to the below message and bookmark this session.



4) Then create the shortcut by copying the bookmark to the desktop. You might want to change the default label to something like “Launch PPS”.

The user will now be able to launch PPS directly from their desktop.